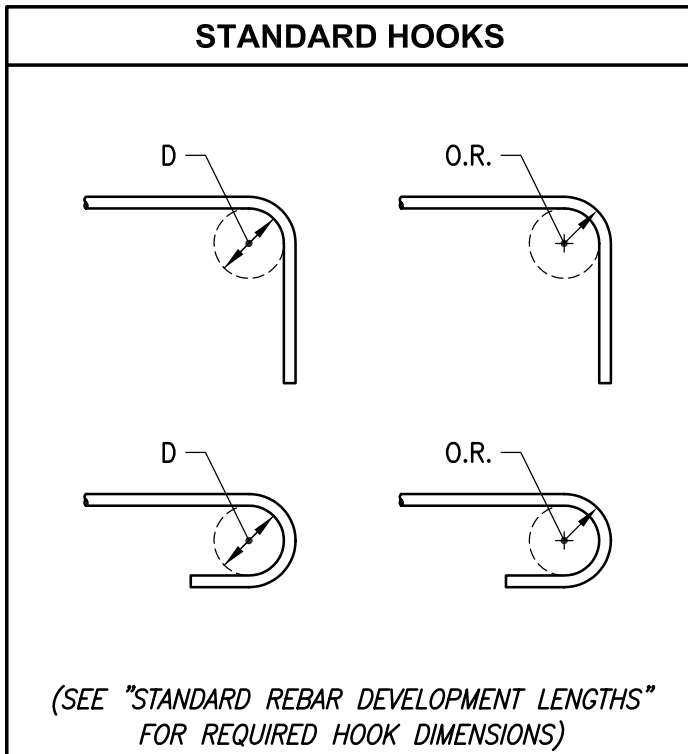
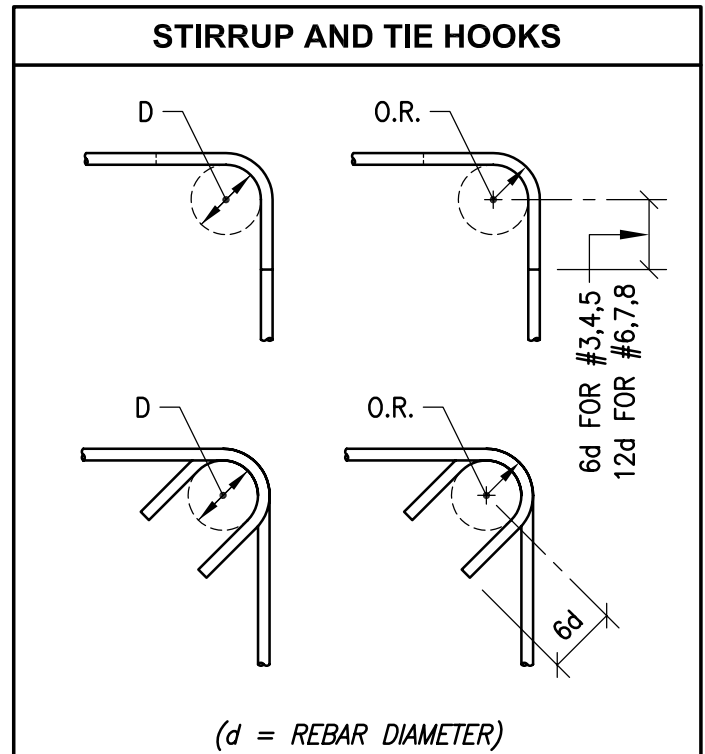


# STANDARD REBAR BEND DIMENSIONS



REBAR SIZE	PIN DIAMETER (D) IN.	OUTSIDE RADIUS (O.R.) IN.
#3	2.250	1.500
#4	3.000	2.000
#5	3.750	2.500
#6	4.500	3.000
#7	5.250*	3.500
#8	6.000*	4.000
#9	9.500	5.878
#10	10.750	6.645
#11	12.000	7.410
#14	18.250	10.818
#18	24.000	14.257



REBAR SIZE	PIN DIAMETER (D) IN.	OUTSIDE RADIUS (O.R.) IN.
#3	1.500	1.125
#4	2.000	1.500
#5	2.500	1.875
#6	4.500	3.000
#7	5.250*	3.500
#8	6.000*	4.000

\* = ASTM A767 REQUIRES THAT BARS BENT COLD PRIOR TO HOT DIP GALVANIZING MUST BE FABRICATED TO A MINIMUM BEND DIAMETER EQUAL TO 7 IN. FOR #7 BAR AND 8 IN. FOR #8 BAR.