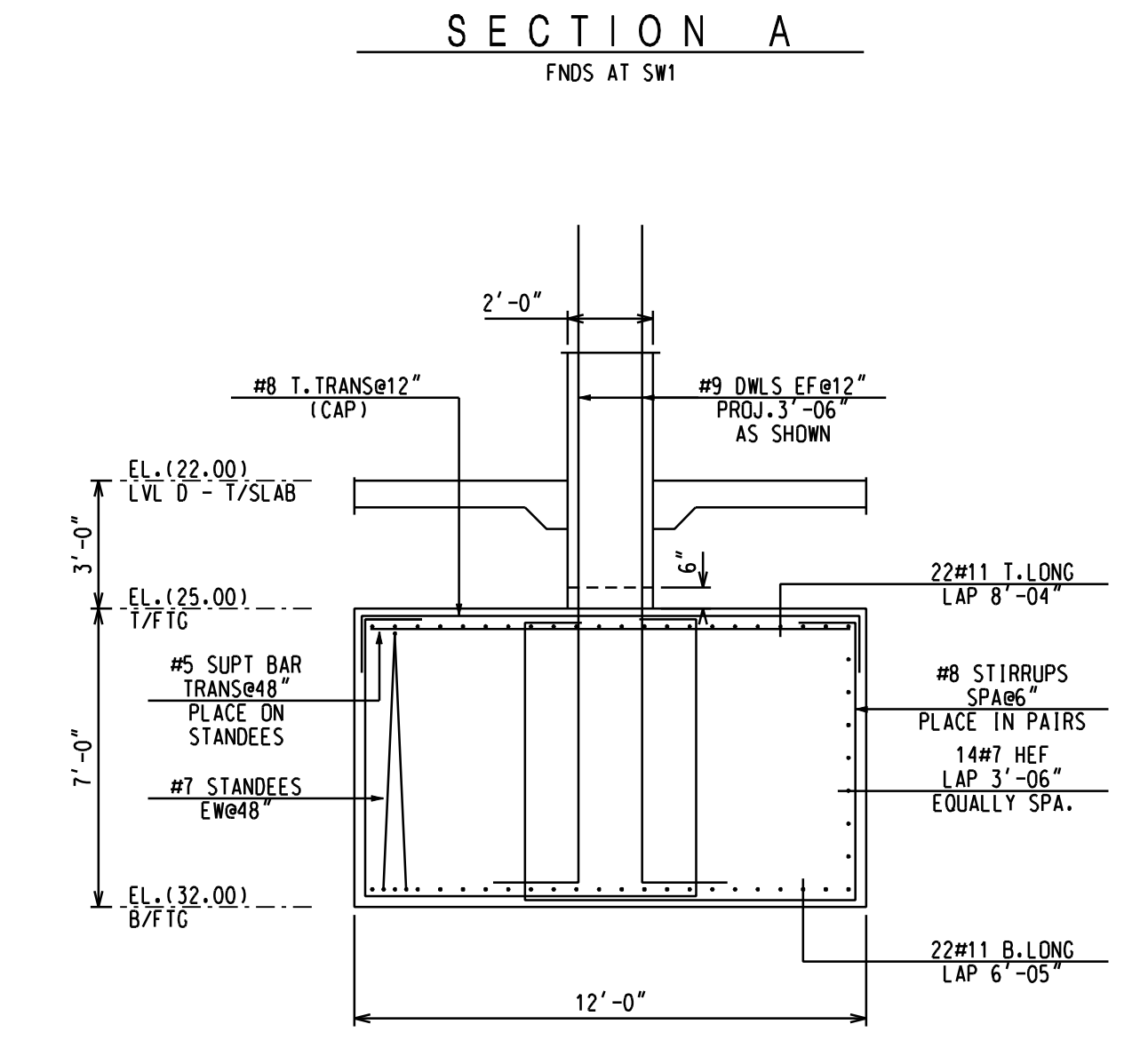
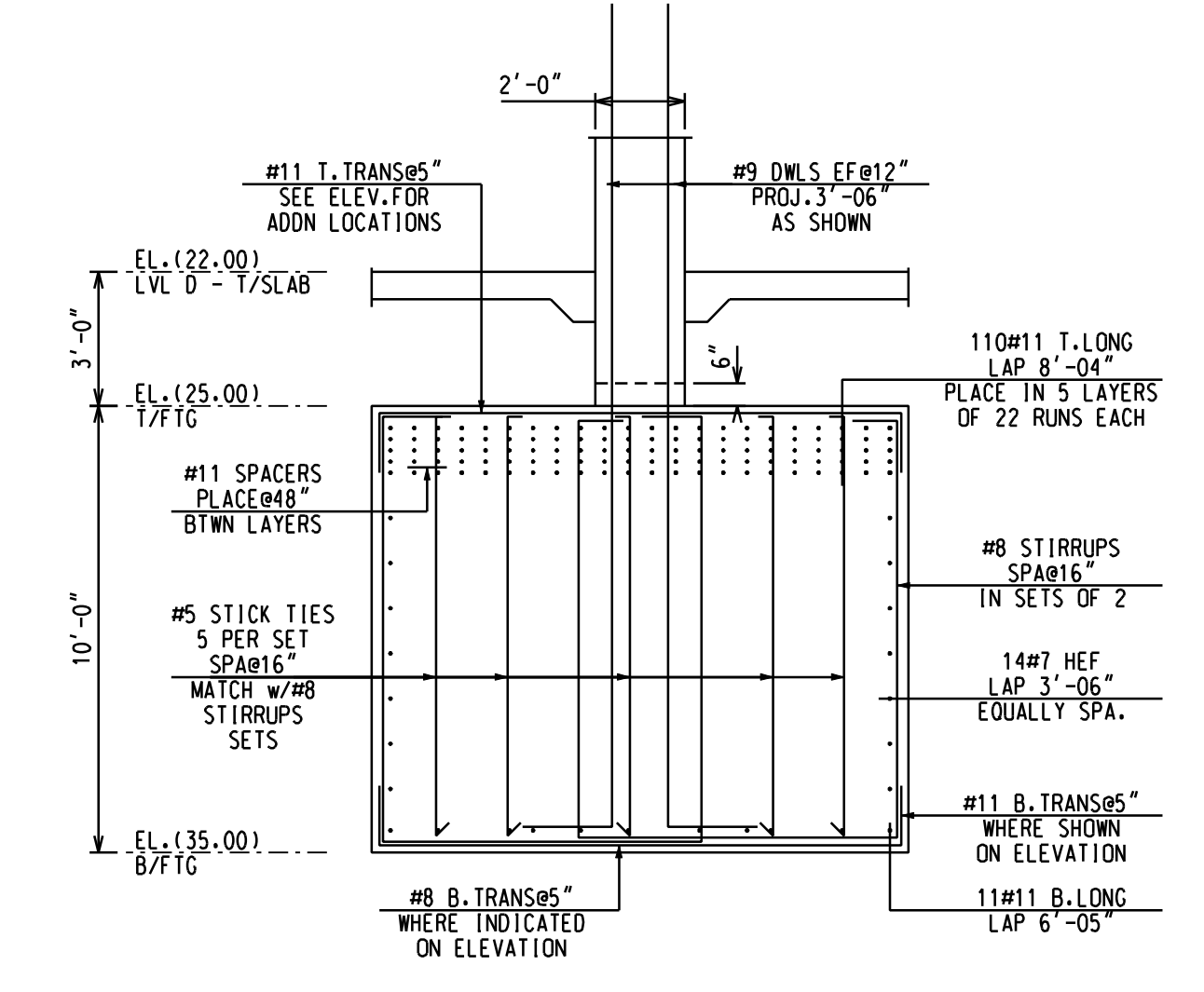
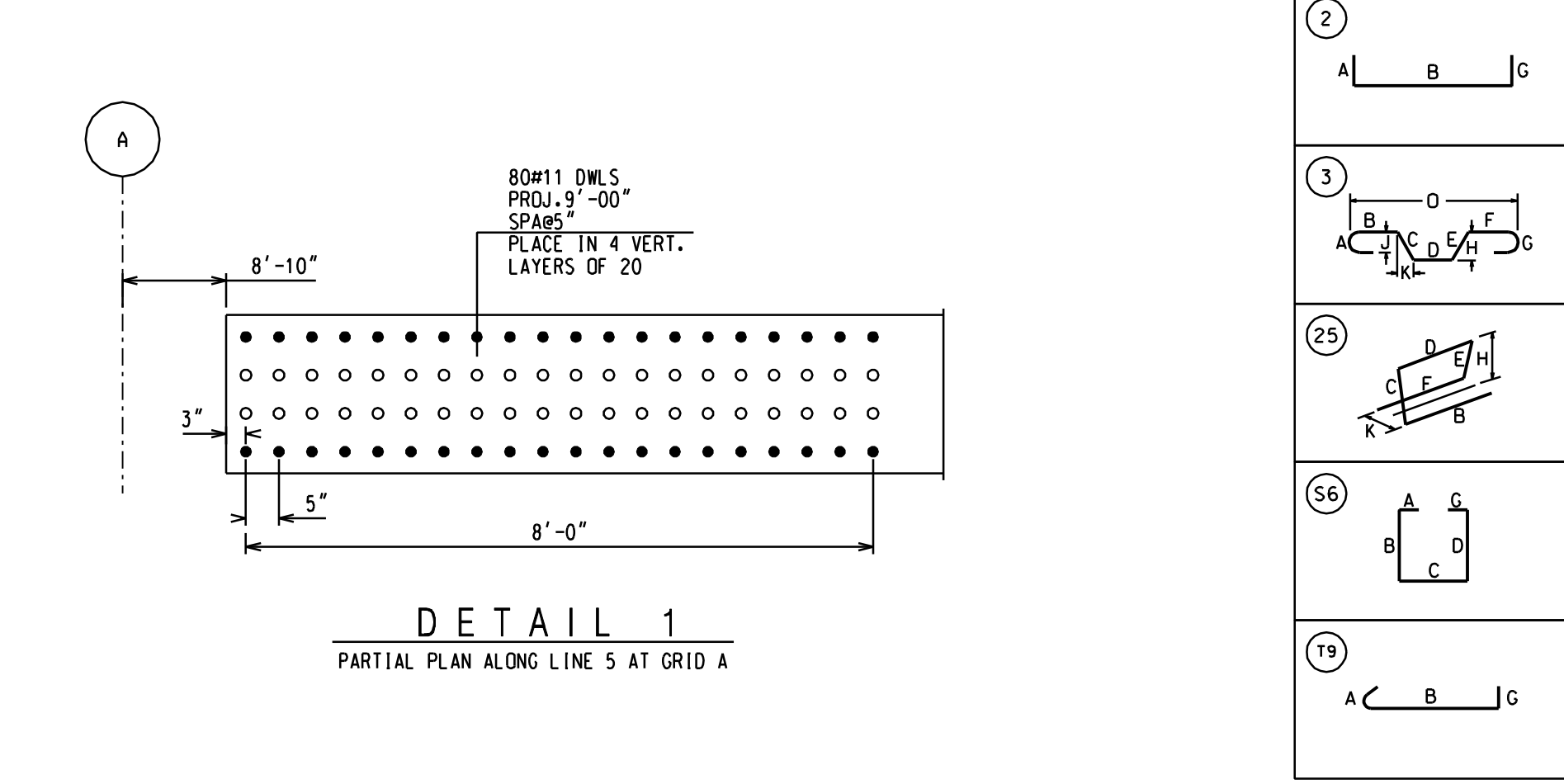


SIZE	EP	BAR MARK	V	BND	TYP	CD	A	B	C	D	E	F/R	G	H	J	K	D
11		11M1			2	2-00	55-03										
11		11N3			2	2-00	26-03										
11		11N4			3	12-06	6-05								4-062		4-062
11		11N5			2	2-00	42-06										
11		11N6			2	2-00	52-04										
11		11M11			2	2-00	19-04										
11		11N14			2	2-00	11-06										2-00
9		9N12			2	1-07	13-09										
9		9N13			2	1-07	10-09										
8		8N7		S6	1-04	6-06	7-09	6-06									1-04
8		8N8		2	1-04	11-06											
8		8N15		S6	1-04	9-06	7-03	9-06									
7		7N17		25	1-06	6-052	1-00	6-052	1-06								6-012
5		5N16		19	0-052	9-06											



REVISION NOTE NO.2 - 6/7/06
 REVISION NOTE NO.1 - 5/17/06
 REVISION PER ENGR REVIEW w/COMMENTS 5/30/06
 REVISION PER TURNER/BAYSHORE COMMENTS - STIRRUP CONFGS

DATE	REV. NO.	DESCRIPTION	DATE	SENT FOR
6/7/06	2	SEE REV. NOTE NO.2	5/17/06	APPROVAL
5/17/06	1	SEE REV. NOTE NO.1	5/17/06	APPROVAL

BARKER STEEL CO., INC.

ALLENTOWN
OFFICE

PROJECT: **CHILDRENS HOSPITAL OF PHILADELPHIA**

LOCATION: **SOUTH CAMPUS PROJECT PHASE 1**

ARCHITECT: **TSOI KOBUS & ASSOC., INC.**

ENGINEER: **LeMESSURIER CONSULTANTS**

CUSTOMER: **MADISON CONCRETE CONSTRUCTION**

Drawn By: **EMP/ARDS** Date: **5-12-06** Reviewed By: Job No. **10020636**

Drawing Covers: **SHEARWALL NO.1 FTG/DWLS** Drawing no. **R27**

REFERENCE DWGS.
 S303 ISSUE 10
 S3007.2 ISSUE 11
 S3007.2 ISSUE 11
 S300 ISSUE 10
 S602 ISSUE 7
 S301 ISSUE 12

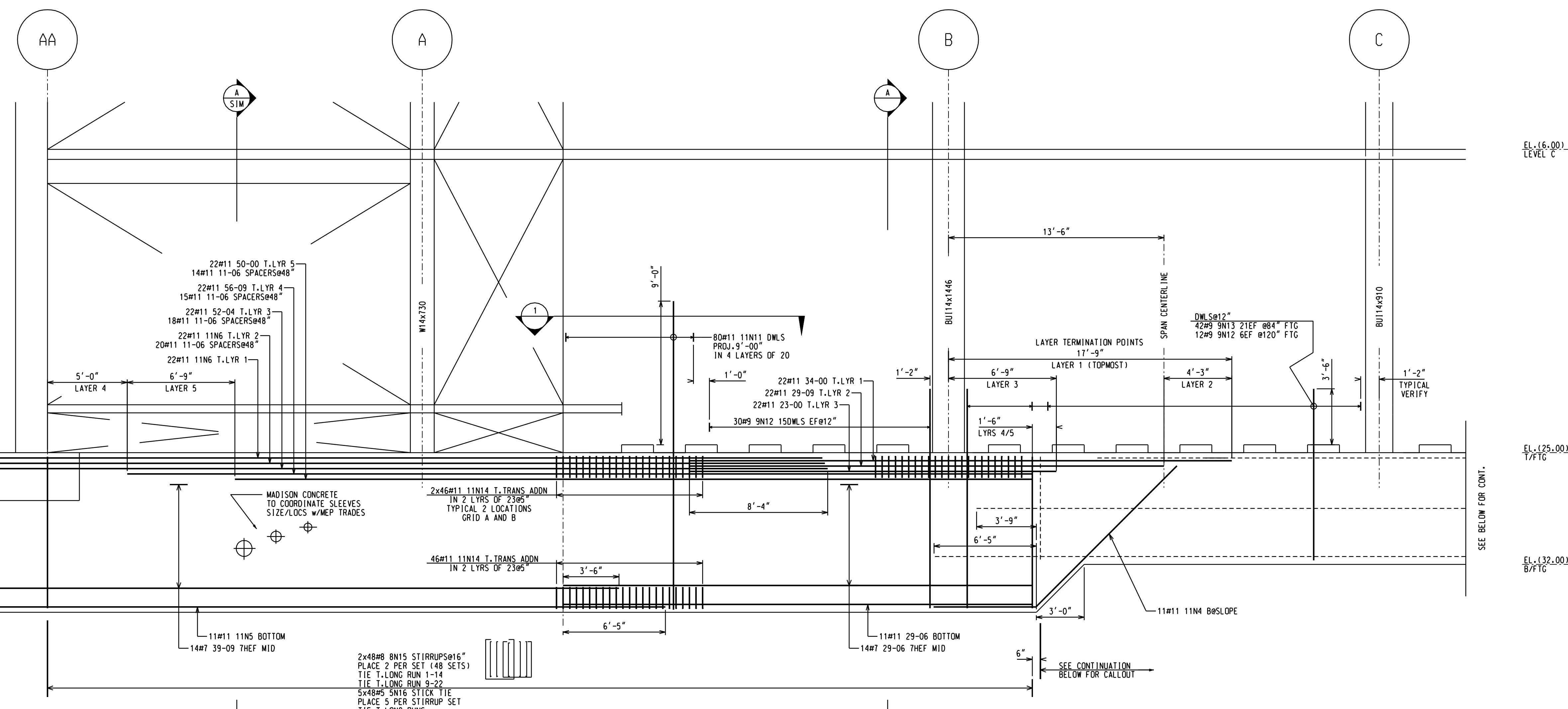
REINFORCING BARS
 ASTM A618 GRADE 60
 UNLESS NOTED
 LAP ALL CONTINUOUS BARS AS NOTED
 *3 - *6 - *28* *9 - *42*
 *4 - *18* *7 - *33* *10 - *50*
 *5 - *23* *8 - *37* *11 - *52*

NOTICE
 Shortages, improper fabrication or claims for any other reason must be reported to this company within a period of 30 days of delivery. This company reserves the right to field inspect prior to replacement or reconditioning of nonconforming material, and will not honor charges for work done in the field without specific authorization from this company.

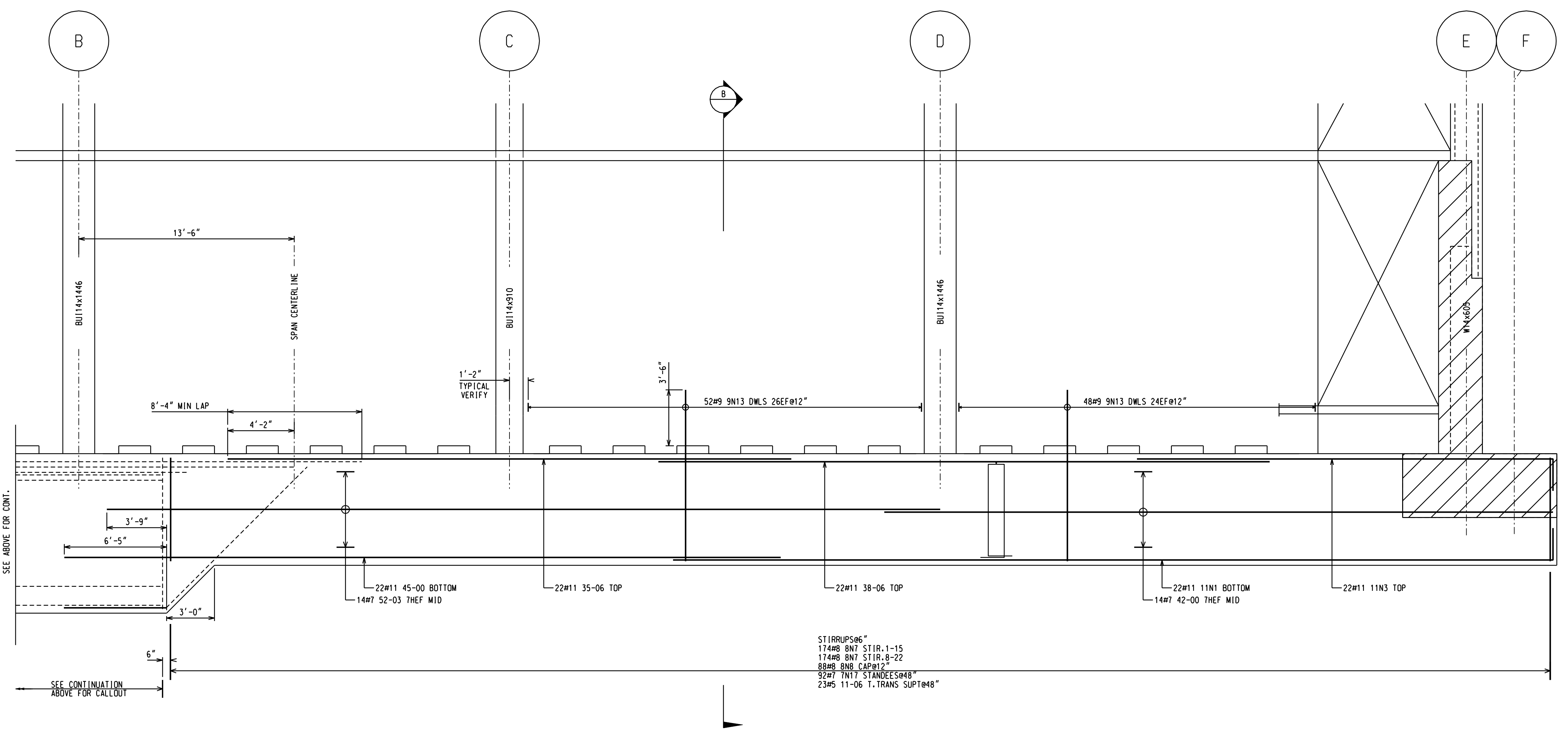
REINFORCING STEEL PLACING DRAWINGS ONLY USE IN CONJUNCTION WITH CONTRACT DRAWINGS & SPECIFICATIONS. ELEVATIONS & DIMENSIONS SHOWN ON THIS DRAWING ARE FOR DETAILING PURPOSES ONLY AND SHOULD NOT BE USED FOR CONSTRUCTION UNLESS VERIFIED BY ENGINEER OR CONTRACTOR.

Legend:
 V Vertical
 H Horizontal
 OF Outside Face
 NF Near Face
 FF Far Face
 EF Each Face

Legend:
 V Vertical
 H Horizontal
 EW Each Way
 B/Bot Bottom
 T Top
 SB Support Bars

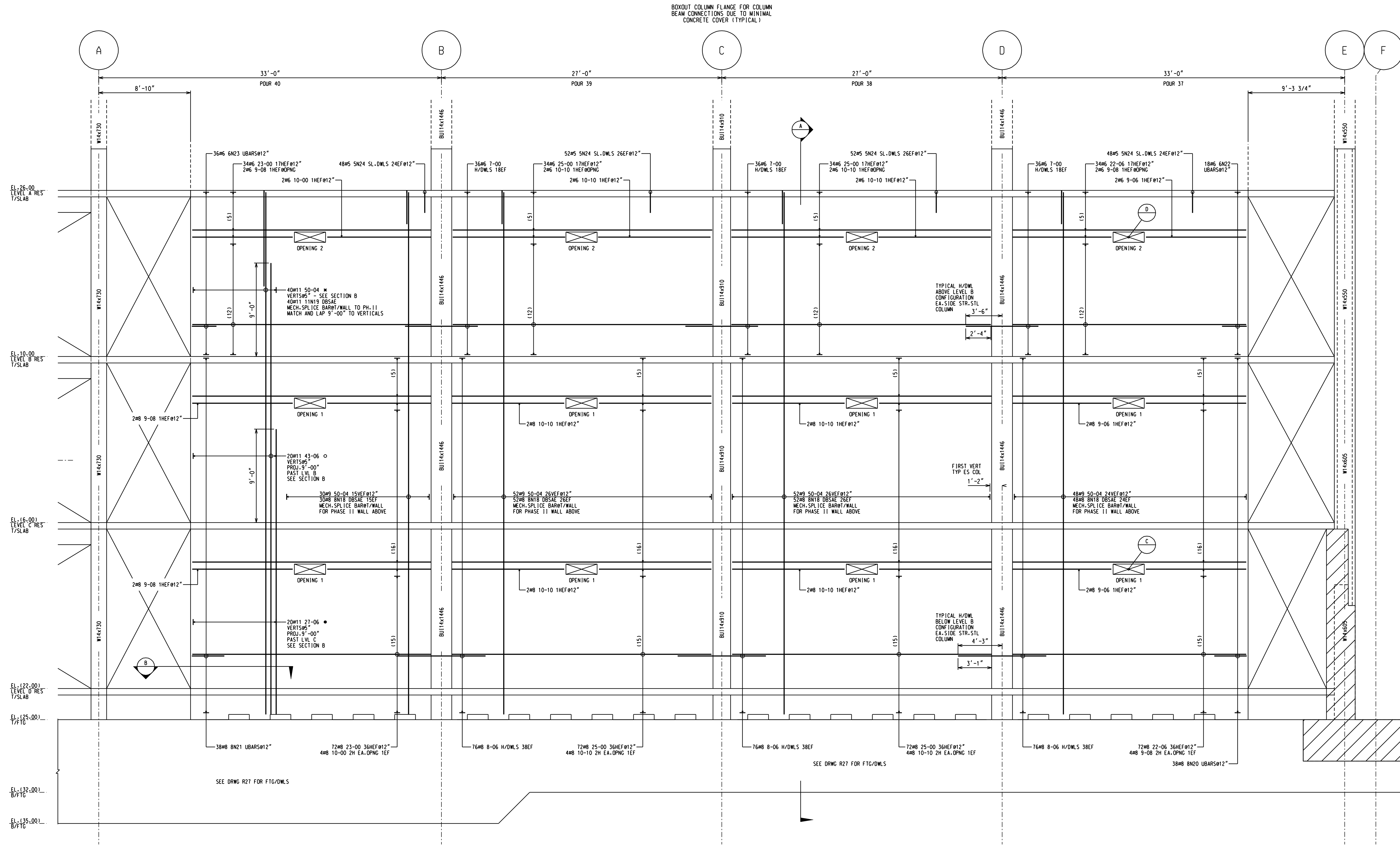


PARTIAL ELEVATION - SW1 FTG/DWLS

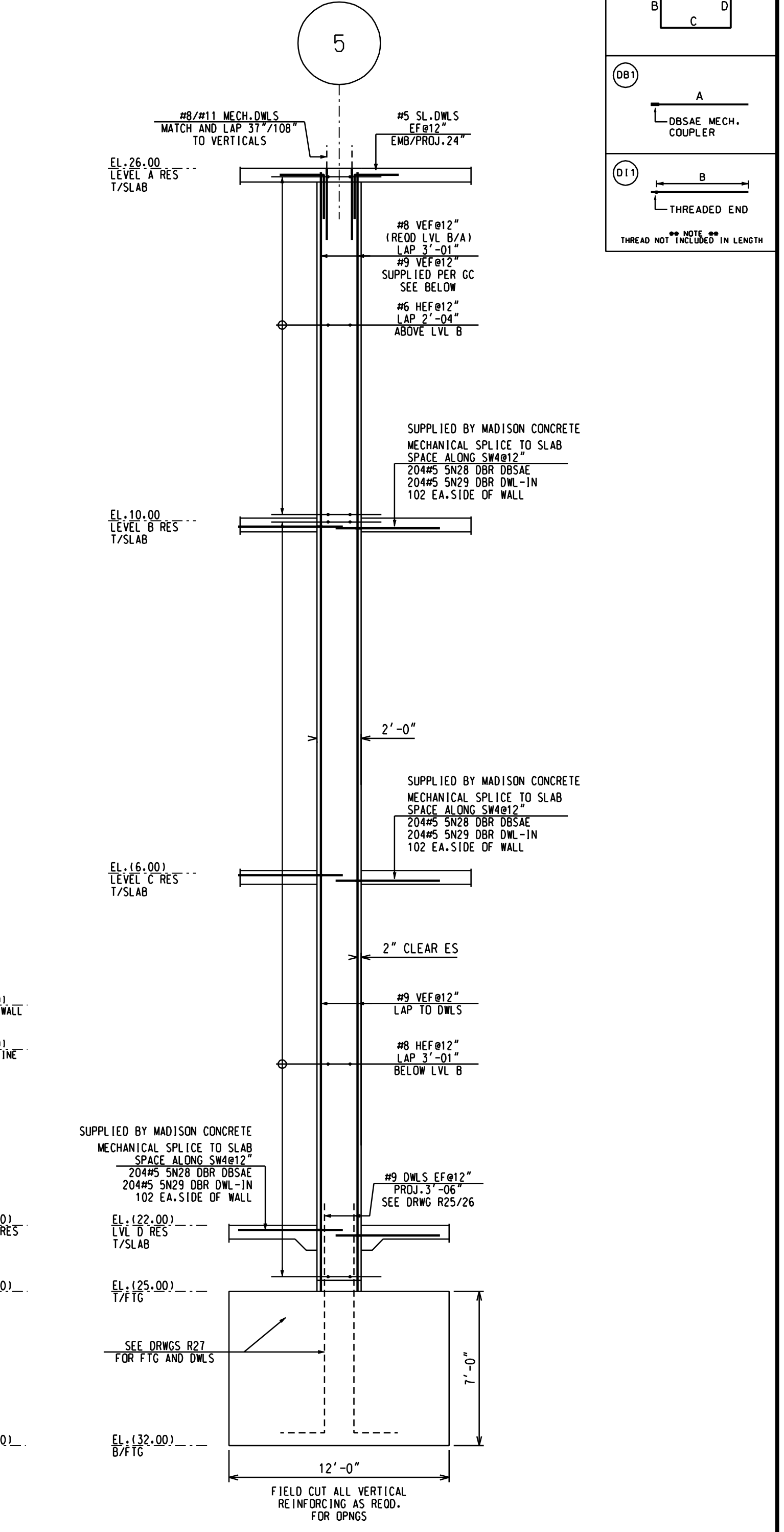


BALANCE ELEVATION - SW1 FTG/DWLS

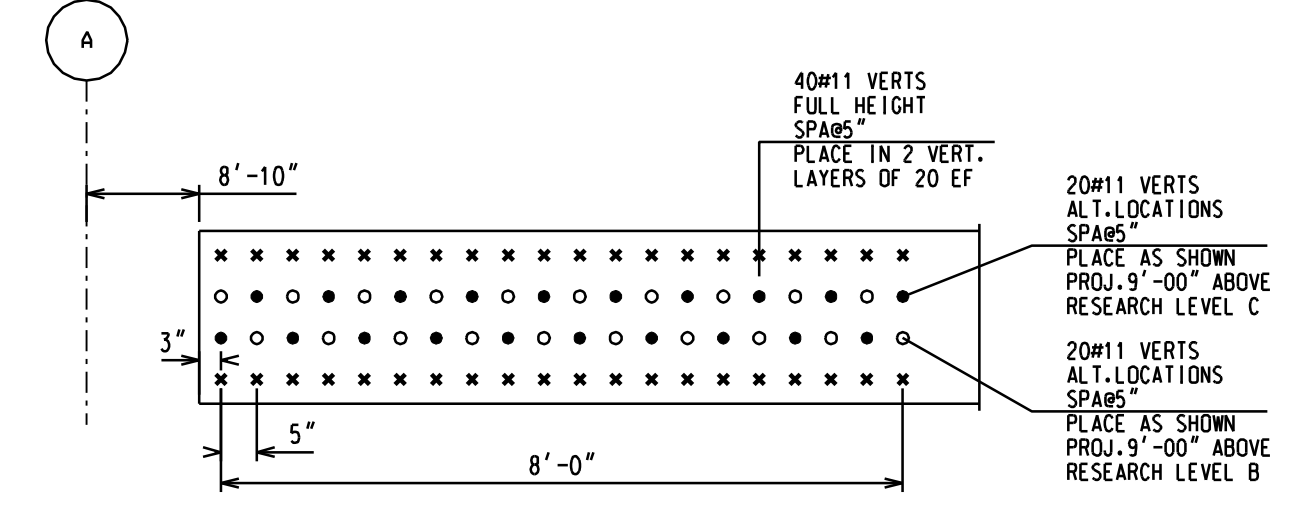
SIZE	EP	BAR MARK	END TYP	CD	BENDING DIMENSIONS												
					A	B	C	D	E	F/R	G	H	J	K	O		
11		11N19	DB1		9-03												
9		9N27	17		3-06	1-08	3-06										
8		8N18	DB1		3-03												
8		8N20	17		3-01	1-052	3-01										
8		8N21	17		3-01	1-05	3-01										
8		8N25	17		3-01	1-08	3-01										
6		6N22	17		2-04	1-052	2-04										
6		6N23	17		2-04	1-05	2-04										
5		5N24	17		2-00	2-00											
5		5N28	DB1		1-06												
5		5N29	D11		3-00												



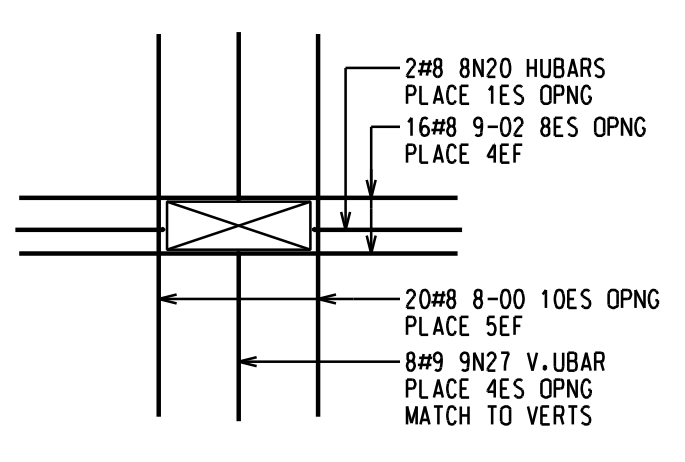
ELEVATION - SW1 WALL REINFORCING
SHEARWALL 1 ALONG LINE 5
MADISON CONCRETE TO COORDINATE ALL BOX-CUT AND SLEEVE LOCATIONS WITH MEP TRADES



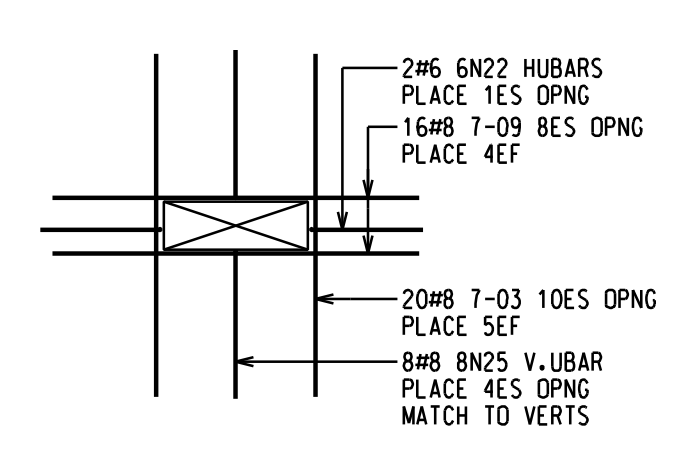
SECTION A
SECTION # SHEARWALL 2 ALONG LINE 8



SECTION B
PARTIAL PLAN ALONG LINE 5 AT GRID A



DETAIL C
PARTIAL ELEVATION AT OPENING 1
OPENING 36" x 12"
ALL REINFORCING - 8 THUS



DETAIL D
PARTIAL ELEVATION AT OPENING 2
OPENING 36" x 12"
ALL REINFORCING - 4 THUS

REFERENCE DWGS.
CP100.2 ISSUE 14
CP007.2 ISSUE 14
S007.2 ISSUE 14
S220 ISSUE 14
S022 ISSUE 14
S301 ISSUE 14

REINFORCING BARS	GRADE
ASTM A615 GRADE 60	
LAP ALL CONTINUOUS BARS AS NOTED	
+3	+6
+4	+7
+5	+8

NOTICE
Shortages, improper fabrication or claims for any other reason must be reported to this company within a period of 15 days of delivery. This company reserves the right to field inspect prior to replacement or reconditioning of nonconforming material and will honor charges for work done in the field without specific authorization from this company.

REINFORCING STEEL PLACING DRAWINGS ONLY USE IN CONJUNCTION WITH CONTRACT DRAWINGS & SPECIFICATIONS. ELEVATIONS & DIMENSIONS SHOWN ON THIS DRAWING ARE FOR DETAILING PURPOSES ONLY AND SHOULD NOT BE USED FOR CONSTRUCTION UNLESS VERIFIED BY ENGINEER OR CONTRACTOR.

REVISION NOTE NO. 1 - 9/8/06
- REVISED PER ENR REVIEW w/COMMENTS 7/3/06

DATE	REV. NO.	DESCRIPTION	DATE	SENT FOR
			9-8-06	RECORD
			6-15-06	APPROVAL

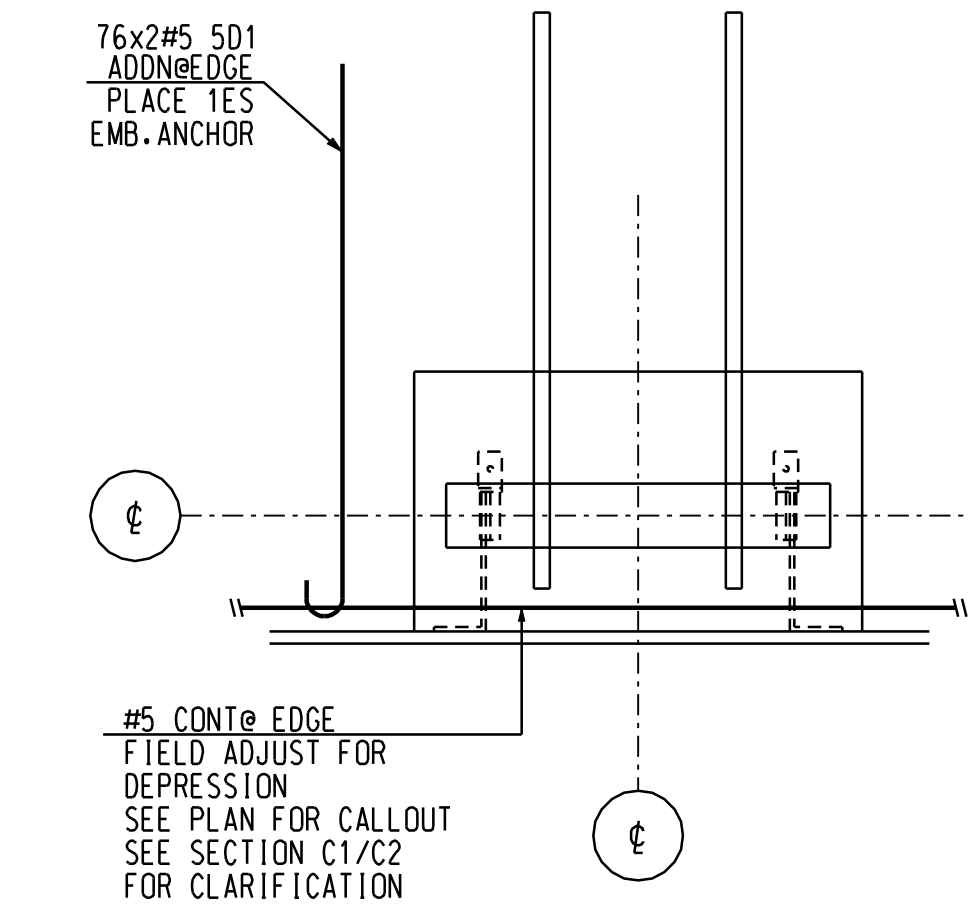
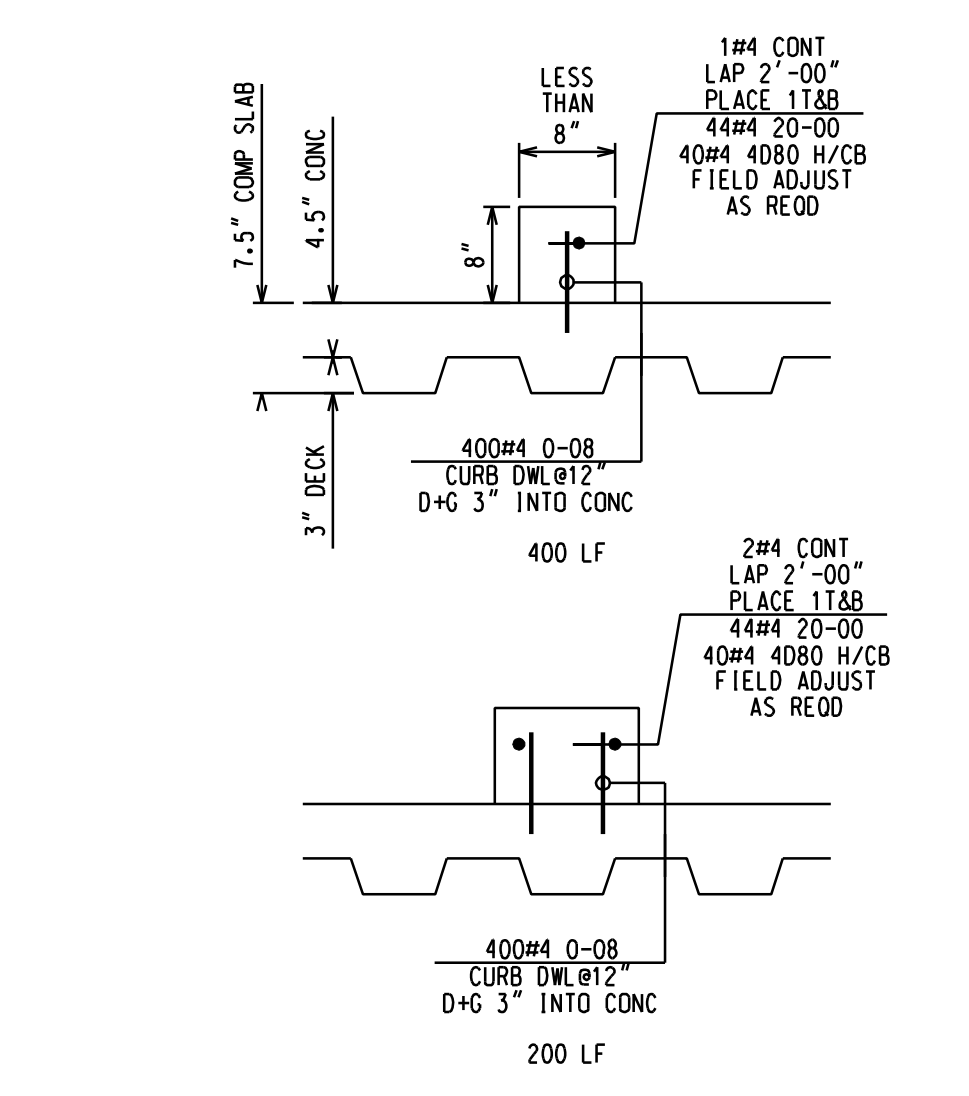
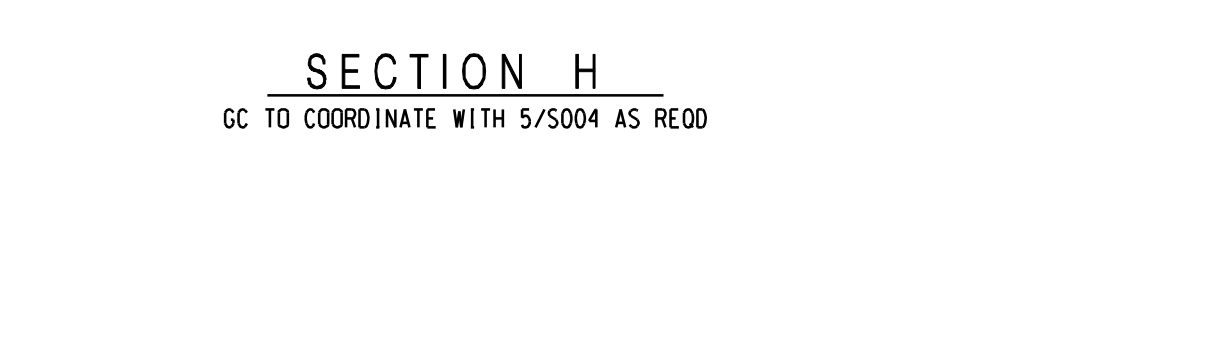
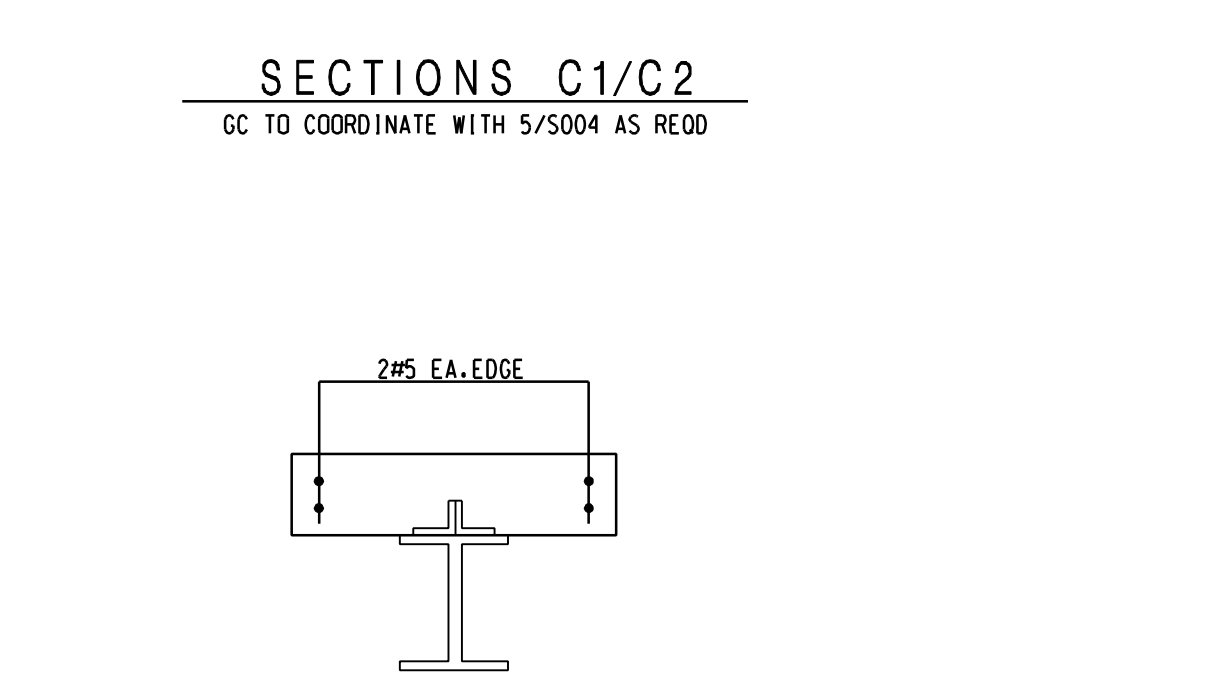
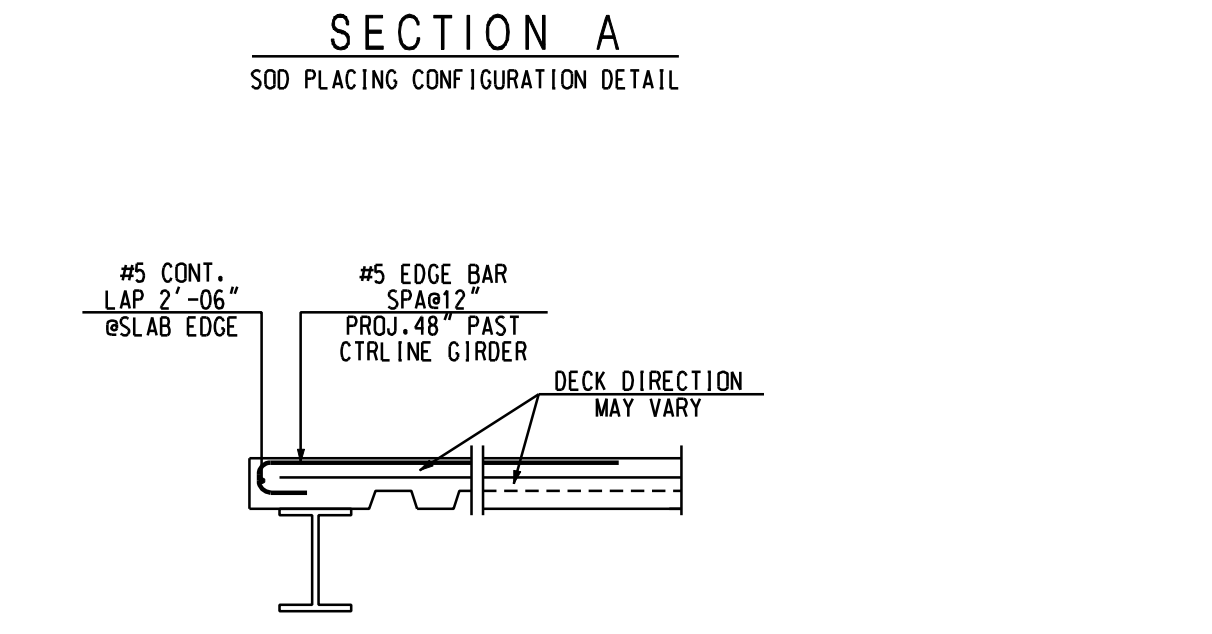
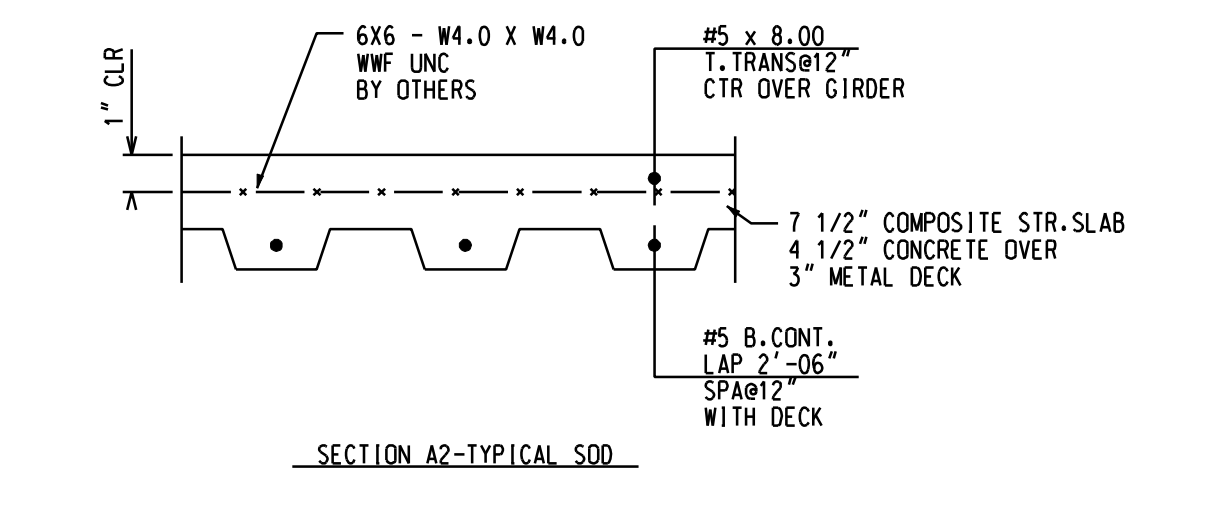
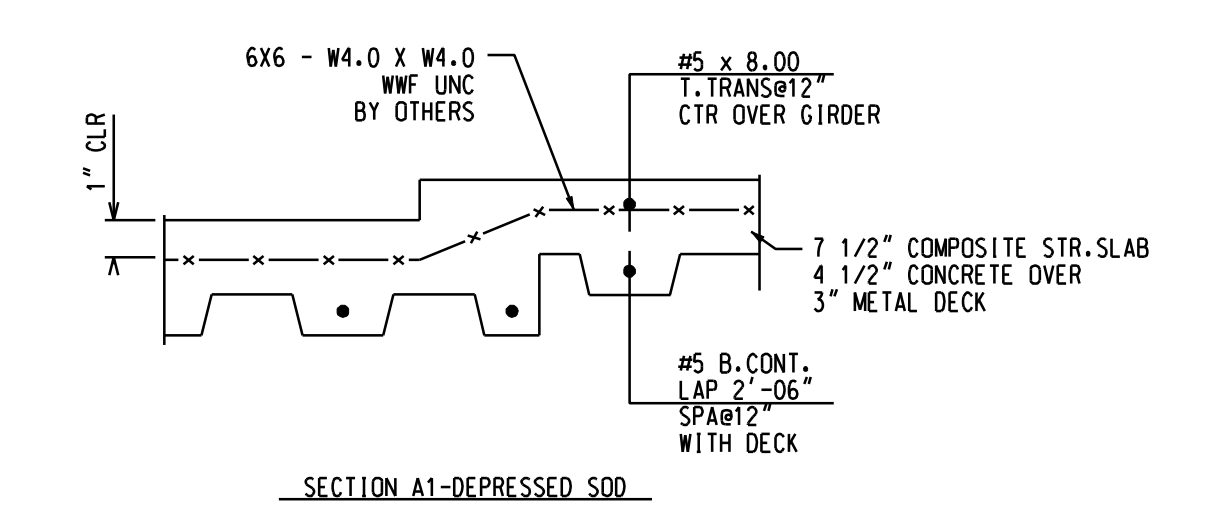
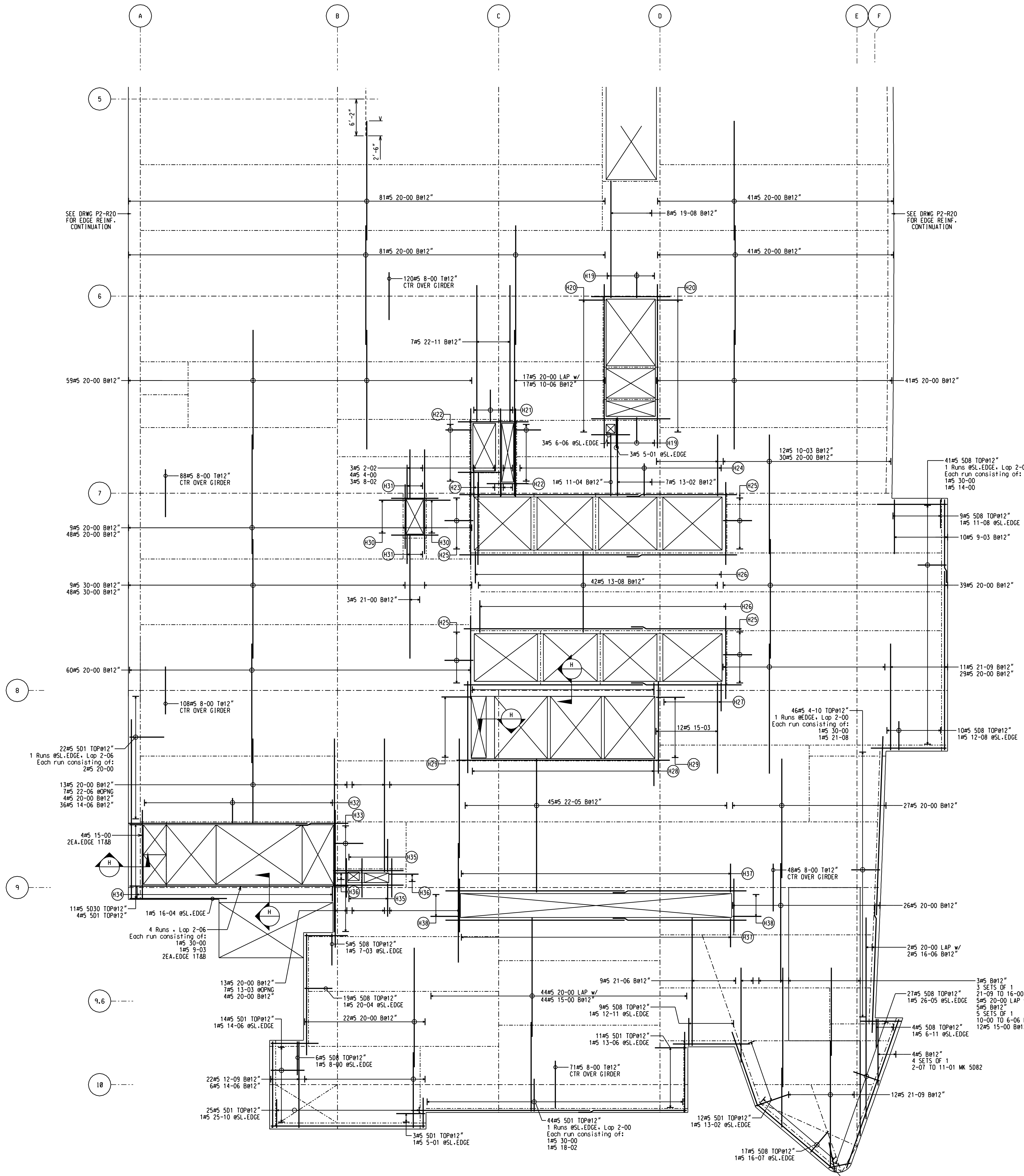
BARKER STEEL CO., INC.

ALLENTOWN

PROJECT: CHILDREN'S HOSPITAL OF PHILADELPHIA SOUTH CAMPUS PROJECT PHASE 1
LOCATION: PHILADELPHIA, PA.
ARCHITECT: TSOI KOBUS & ASSOC., INC.
ENGINEER: LAMMESSURIER CONSULTANTS

CUSTOMER: MADISON CONCRETE CONSTRUCTION
Drawn By: EMP/PARDS Date: 6-15-06 Reviewed By: Job No. 10020636
Drawing Covers: SHEARWALL NO.1 WALL REINFORCING Drawing no. R42

SIZE	EP	BAR MARK	BND	Y	CD	A	B	C	D	E	F	G	H	J	K	D
5		501		1	0-07	5-10										
5		508		1	0-07	4-10										
5		5011		1	0-07	4-05										
5		5022		1	0-07	1-08										
5		5030		1	0-07	2-02										
5		5031		1	0-07	2-08										
5		5047		1	0-07	5-10										
5		5048		1	0-07	2-05										
5		5051		1	0-07	4-07										
4		4080		17	2-00	2-00										



SLAB REINFORCING SCHEDULE

H19- 3x3#5 5011 TOP&T12	H29- 2x12#5 508 TOP&T12
3x3#5 13-03 #SL. EDGE	2x3#5 15-05 #SL. EDGE
H20- 3x24#5 5051 TOP&T12	H30- 2x7#5 5011 TOP&T12
3x3#5 27-06 #SL. EDGE	2x3#5 10-10 #SL. EDGE
H21- 3#5 508 TOP&T12	H31- 2#5 508 TOP&T12
3#5 11-10 #SL. EDGE	2x3#5 7-11 #SL. EDGE
H22- 2x1#5 5011 TOP&T12	H32- 3#5 5011 TOP&T12
3x3#5 14-11 #SL. EDGE	3 Runs #SL. EDGE, Lap 2-06
H23- 2#5 5022 TOP&T12	Each run consisting of:
3#5 5047 TOP&T12	1#5 20-00
3#5 7-00 #SL. EDGE	1#5 20-00
H24- 3#5 508 TOP&T12	H33- 1#5 508 TOP&T12
3 Runs #SL. EDGE, Lap 2-06	3#5 23-00 #SL. EDGE
Each run consisting of:	H34- 21#5 5031 TOP&T12
1#5 30-00	12#5 5030 TOP&T12
1#5 18-06	3#5 5011 TOP&T12
H25- 4x10#5 508 TOP&T12	3 Runs #SL. EDGE, Lap 2-06
2x3#5 13-11 #SL. EDGE	Each run consisting of:
H26- 4#5 5011 TOP&T12	1#5 20-00
3 Runs #SL. EDGE, Lap 2-06	1#5 20-00
Each run consisting of:	3#5 22-10 #SL. EDGE
1#5 20-00	H35- 2x#5 501 TOP&T12
1#5 20-00	2x3#5 11-10 #SL. EDGE
H27- 1#5 508 TOP&T12	H36- 3#5 508 RS-TOP&T12
3 Runs #SL. EDGE, Lap 2-06	3#5 5048 15-TOP&T12
Each run consisting of:	3x3#5 8-07 #SL. EDGE
2#5 20-00	H37- 2x41#5 508 TOP&T12
1#5 11-00	3 Runs #SL. EDGE, Lap 2-06
H28- 3#5 5011 TOP&T12	Each run consisting of:
3 Runs #SL. EDGE, Lap 2-06	2#5 20-00
Each run consisting of:	1#5 15-00
1#5 20-00	H38- 2x5#5 508 TOP&T12
1#5 18-03	2x3#5 9-00 #SL. EDGE

BALANCE PLAN - RESEARCH SOD SEVENTH FLR REINFORCING

REFERENCE DWGS.
S102.1 ISSUE 15
S102.2 ISSUE 15
S003 ISSUE 2

REINFORCING BARS
ASTM A615 GRADE 60
UNLESS NOTED

LAP	ALL CONTINUOUS BARS	LAP
*3	*6	*9
*4	*7	*10
*5	*8	*11

Legend:
V Vertical
H Horizontal
E/W Each Way
N/S Top
B/Bot Bottom
F/F Each Face
SB Support Bars

ALL REINF ON THIS DWG IS
BLACK UNCOATED
REBAR

NOTICE
Shortages, improper fabrication or claims for any other reason must be reported to this company within a period of 15 days of delivery. This company reserves the right to field inspect prior to replacement or reconditioning of nonconforming material, and will not honor charges for work done in the field without specific authorization from this company.

REINFORCING STEEL PLACING DRAWINGS ONLY USE IN CONJUNCTION WITH CONTRACT DRAWINGS & SPECIFICATIONS ELEVATIONS & DIMENSIONS SHOWN ON THIS DRAWING ARE FOR DETAILING PURPOSES ONLY AND SHOULD NOT BE USED FOR CONSTRUCTION UNLESS VERIFIED BY ENGINEER OR CONTRACTOR.

REVISION NOTE NO. 1 - 5/14/08
- REVISED PER ENGR REVIEW W/COMMENTS 5/9/08

DATE	REV. NO.	DESCRIPTION	DATE	SENT FOR APPROVAL
			5/14/08	FIELD/FILE
			4/28/08	APPROVAL
			1/4	APPROVAL

BARKER STEEL CO., INC.

ALLENTOWN OFFICE

PROJECT: CHILDRENS HOSPITAL OF PHILADELPHIA
SOUTH CAMPUS PROJECT PHASE II

LOCATION: PHILADELPHIA, PA.

ARCHITECT: BALLINGER

ENGINEER: LEMESSURIER CONSULTANTS

CUSTOMER: MADISSON CONCRETE CONSTRUCTION

Drawn By: EMP/ARDS Date: 10/10 Reviewed By: Job No. 10024866

Drawing no. SOD RESEARCH REINF. 7TH FLOOR GRIDS 5 TO 10 P2-R20